

PART OF THE N.1/2, OF SECTION 36, T.7N., R.2W., S.L.B. & M.  
WEBER INDUSTRIAL PARK PLAT "D" LOT 3A  
A CONDOMINIUM DEVELOPMENT

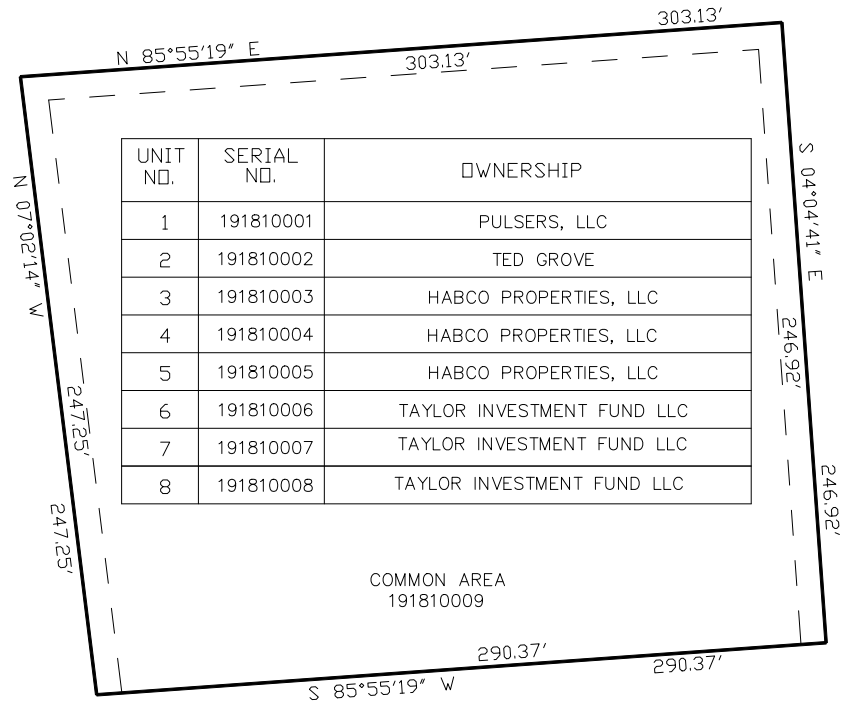
TAXING UNIT: 17

IN WEBER COUNTY  
SCALE 1" = 40'

SEE PAGE 157

SEE PAGE 157

SEE PAGE 157



SEE PAGE 182

10' UTILITY & DRAINAGE EASEMENTS EACH  
SIDE OF PROPERTY LINES AS INDICATED  
BY DASHED LINES EXCEPT AS OTHERWISE  
SHOWN.

FOR COMPLETE ENG DATA SEE  
ORIGINAL DEDICATION PLAT IN  
BOOK 57, PAGE 46 OF RECORDS.